



شرکت دانش بنیان کارن

KARENCONNECTOR.COM



کانکتورهای استوانه ای سری Y2M

Y2M series circular connectors



مشخصات :

- کاربرد آسان
- حجم کم
- قابلیت تست دوام بالا (سیکل جفت شدن و جدا شدن بالا)
- قیمت پایین
- سبک
- مقاومت در برابر خوردگی
- استحکام دی الکتریک بالا
- هدایت رسانایی بالا
- جایگزین کانکتورهای سری P

کاربرد: در اتصال تجهیزات الکتریکی و تجهیزات اندازه گیری ابعادی

Y2M series circular connectors are used extensively in line connections between electrical equipment, various instruments and meters. These connectors have the features of small volume, light weight, convenient application, high durability of plugging and unplugging, good sealing performance, resistance against corrosion, high conductivity and high dielectric strength. It's the ideal product of a new generation to replace the old "P" series connectors.

Product Ordering

<u>Y</u>	<u>2</u>	<u>M</u>	-	<u>10</u>	<u>Z</u>	<u>J</u>	<u>L</u>	<u>M</u>
1	2	3		4	5	6	7	

1. Name of series: Y2 series circular connectors
2. M—Normal, Without M—Military product
3. Number of contacts: 3, 4, 5, 7, 10, 14, 19, 24, 32, 36, 37, 50, 65, 81, 120
4. T—Plug, Z—Receptacle
5. Type of contacts: J—Pin, K—Socket
6. Termination: L— With Cable shell, B—Square Flange
7. M—Receptacle sealing

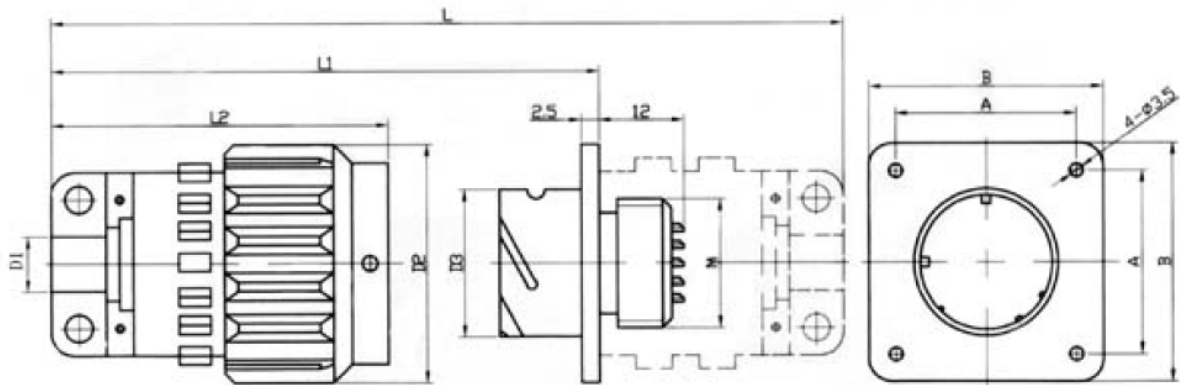
Technical characteristics

Temperature	Relative humidity	Atmosphere	Vibration	Shock	Endurance
-40° C ~ +85° C	(92~98) % at 40±2° C	101.33KPa~6.67Pa	10~2500Hz, 196m/s ²	392m/s ²	500 cycles

Contact Ø	Current	Voltage	Contact resistance
Ø1mm	5A	250V	≤5mΩ
Ø1.5mm	10A	250V	≤3mΩ
Ø2.5mm (only 3, 4, 5)	25A	250V	≤1mΩ

Environment	Voltage proof	Insulation resistance
Normal	1000V	$\geq 1000M\Omega$
High temperature	900V	$\geq 1000M\Omega$
Moisture	500V	$\geq 100M\Omega$

Dimensions



Type	Mating size			Dimension size					
	A	D1	M左	B	D2	D3	L	L1	L2
Y2-3, 4, 5, 7	22-24	$\phi 12$	M21 \times 0.75	31	$\phi 31$	$\phi 22.7$	79	51	45
Y2-10, 14	22-24	$\phi 12$	M21 \times 0.75	31	$\phi 31$	$\phi 22.7$	79	51	45
Y2A-10	28	$\phi 18$	M28 \times 1	38	$\phi 38$	$\phi 28.7$	88	56	49
Y2-19, 24	28	$\phi 18$	M28 \times 1	38	$\phi 38$	$\phi 28.7$	88	56	49
Y2-32, 37	28	$\phi 18$	M28 \times 1	38	$\phi 38$	$\phi 28.7$	88	56	49
Y2-36, 50, 65	36	$\phi 26$	M36 \times 1	46	$\phi 46$	$\phi 36.7$	108	67	60
Y2-81, 120	51	$\phi 40$	M50 \times 1	60	$\phi 60$	$\phi 51.2$	126	77	71