



شرکت دانش بنیان کارن

KARENCONNECTOR.COM



کانکتورهای استوانه ای سری PG/PB مقاوم در برابر باران PB/PG Series rain proof connectors



مشخصات :

- وزن کم
- حجم کم
- کاربری آسان
- تست دوام عالی (جفت شدن و جدا شدن بالا)
- آب بندی خوب
- مقاومت در برابر خوردگی
- هدایت الکتریکی بالا
- استحکام دی الکتریکی بالای مقر
- طراحی شده بر اساس استاندارد SJ/T10496

کاربرد:

- قابل استفاده بطور وسیع در خطوط اتصال تجهیزات الکتریکی و تجهیزات کنترل ابعادی
- کاربردهای نظامی و صنعتی
- قابلیت جایگزینی با سری کانکتورهای P
- قابلیت تغییرات طراحی بر اساس نیاز مشتری در زمینه کانکتورهای مقاوم در برابر باران
-

Products introduction

PB/PG series circular rain proof connectors are used extensively in line connections between electrical equipment, various instruments and meters. These connectors have the features of small volume, light weight, convenient application, high durability of plugging and unplugging, threaded coupling, good sealing performance, high conductivity and high dielectric strength. They are made according to the standard SJ/T10496. They are for military and industrial applications, They can interchange with P series. PB/PG series are specially designed by kaipu for customers use it in rain proof line.

Product Ordering

PB/PG 20 J 3 A P J
 1 2 3 4 5 6 7

1. Name of series: PB:means black color connectors,PG:means green color connectors
2. shell size: 20, 28, 32, 40, 48
3. Type of contacts: J:Pin, K:Socket
4. Sign of contacts: mean type of contacts and number of contacts
5. Type:without mark:plug,A:normal receptacle
6. P:shield shell,Q:normal shell,R:angled shield shell,S:normal angled shell, the receptacle without shell:without mark.
7. J: Au plated, without J: Ag plated

Technical characteristics

Temperature	Relative humidity	Atmosphere	Vibration	Shock	Endurance
-55° C~ +70° C	(92~96) % at40±2° C	100KPa~2 KPa	10~200Hz, 100m/s ²	250m/s ²	500 cycles

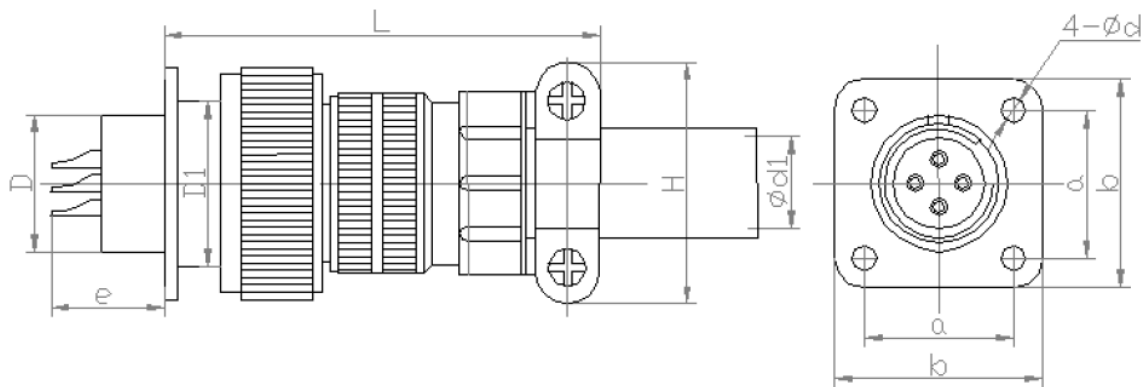
The sealing connectors temperature allow -55° C~+55° C only.

Contacts diameter	Current	Voltage (pressure)				Contact resistance
		100Kpa	8.5KPa	4.4KPa	2KPa	
Ø1.5mm	10A	500V	250V	175V	150V	≤2.5mΩ
Ø2.5mm	25A					≤1mΩ

Ø3.5mm	50A					$\leq 0.5\text{M}\Omega$
Ø5.5mm	100A					$\leq 0.3\text{M}\Omega$

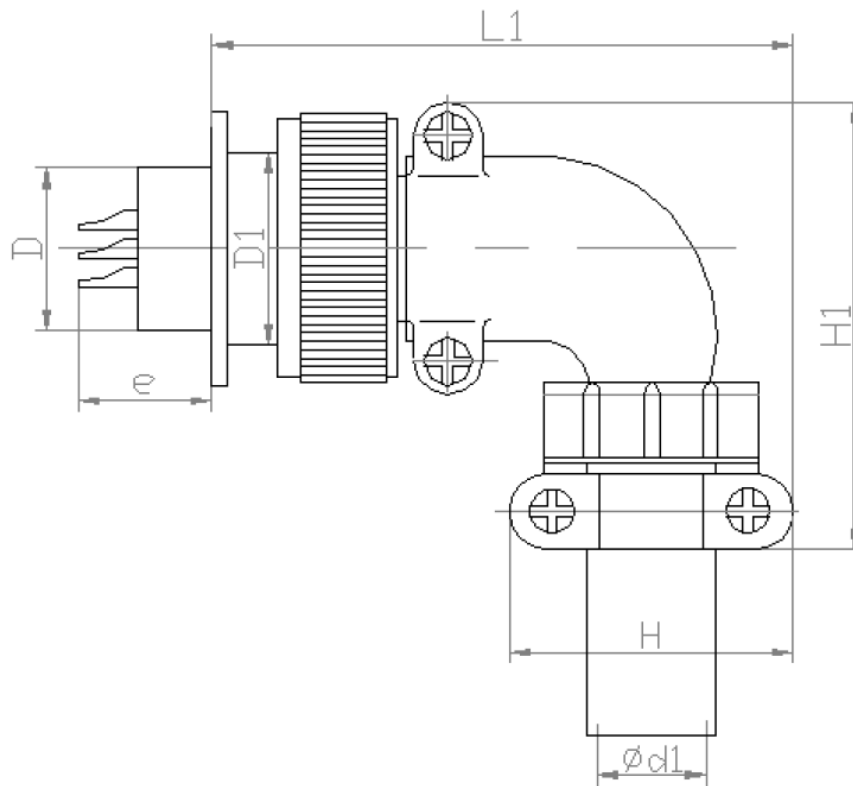
Environment	Voltage proof	Insulation resistance
Normal	1500V	$\geq 500\text{M}\Omega$
Lower pressure (2KPa)	300V	-
Moisture	1000V	$\geq 2\text{M}\Omega$

Dimensions (mm)



Shell		a	b	d	d1	D	D1	H	L	H1	L1
20	A	22	30	3.2	14	20	M24X1.5	29	73	59	71
	M		32	4.5					75		75
28	A	30	38	3.5	21	28	M33X1.5	38	80	76	81
	M		40	4.5					82		85
32	A	32	40	3.5	21	32	M36X1.5	38	80	80	81
	M		44	4.5					84		85
40	A	40	48	3.5	24	40	M45X1.5	42	88	86	88
	M		52	4.5					90		92
48	A	48	58	4.5	32	48	M52X1.5	47	90	95	98
	M		60						102		

Contact diameter		Ø1.5	Ø2.5	Ø3.5	Ø5.5
e	A	15	15	17	19
	M	14	14	16	41

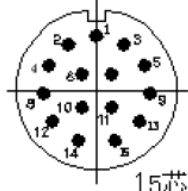
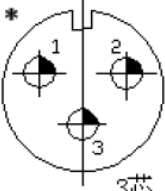
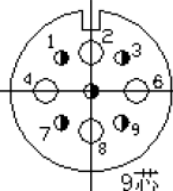
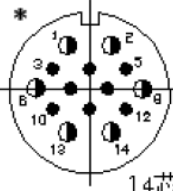
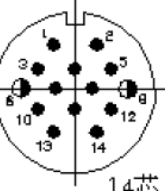
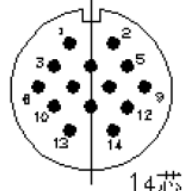
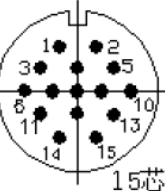
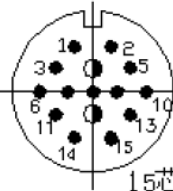
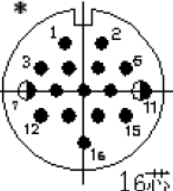
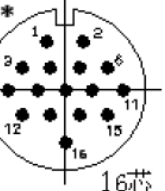
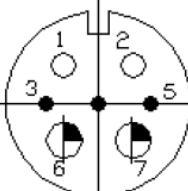
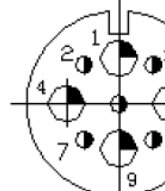
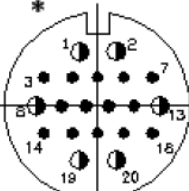
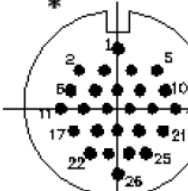


Type	Number of contacts				Type	Number of contacts					
	Sum	Ø1.5	Ø2.5	Ø3.5		Sum	Ø1.5	Ø2.5	Ø3.5	Ø5.5	
PB20 PG20					PB32 PG32	2	8		8		
	2	2		2		7	8	8			
	3	3		3		8	8	7	1		
	4	3	3			9	8	4	4		
	5	3	1	2		10	10	10			
	6	4		4		11	10	6	4		
	7	4	4			3	12	6	6		
	8	4	2	2		12	12	12			
	9	5		5		4	14	14			
	10	5	5			13	4		4		
	11	7	7			17	17	17			
PB28 PG28	1	4		2	2	1	3			3	
	8	4	2	2	3	14	8	6			
	9	4		4	4	14	12	2			
	3	6	4		2	5	14	14			
	11	6	6		6	15	15				
	4	7		7	7	15	13	2			
	12	7	7		8	16	14	2			
	13	7	5	2	9	16	16				
	14	7	4	3	PB48	5	20	14	6		
	15	7	3	4	PG48	6	26	26			

The position of contacts PB/PG series same as P series.

P型电连接器接点型谱图 (注*的为优选品种)								
P20	第1款	第2款	* 3	4	5	* 6		
	φ1.5x2 2芯	φ2.5x2	φ2.5x3 3芯	φ1.5x3	φ2.5x2; φ1.5x1	φ2.5x4 4芯		
P28	7	8	* 9	10	11			
	φ1.5x4 4芯	φ2.5x2; φ1.5x2 4芯	φ2.5x5 5芯	φ1.5x5	φ1.5x7 7芯			
P28	* 第2款	* 3	* 4	7	8	9	10	
	4芯	6芯	7芯	4芯				
P28	11	12	13	14	15			
	6芯	7芯						
P32	* 第2款	* 3	* 4	7	8			
	8芯	12芯	14芯	8芯	8芯			
P32	9	10	11	12	13			
	8芯	10芯	10芯	12芯	12芯			

P型电连接器接点型谱图 (打*为优选规格)

P36 P40	P36-7	* P40-1	P40-2	* P40-3	P40-4
					
P48	P40-5	P40-6	P40-7	* P40-8	* P40-9
					
P48	P48-2	P48-4	* P48-5	* P48-6	
					

Product Ordering

PB/PG 20 J 3 A P J
 1 2 3 4 5 6 7

1. Name of series: PB:means black color connectors, PG:means green color connectors
2. shell size: 20, 28, 32, 40, 48
3. Type of contacts: J:Pin, K:Socket
4. Sign of contacts: mean type of contacts and number of contacts
5. Type:without mark:plug,A:normal receptacle
6. P:shield shell,Q:normal shell,R:angled shield shell,S:normal angled shell, the receptacle without shell:without mark.
7. J: Au plated, without J: Ag plated

Technical characteristics

Temperature	Relative humidity	Atmosphere	Vibration	Shock	Endurance
-55° C [~] +70° C	(92 [~] 96) % at40 ⁺² ° C	100KPa [~] 2 KPa	10 [~] 200Hz, 100m/s ²	250m/s ²	500 cycles

The sealing connectors temperature allow -55° C[~]+55° C only.

Contacts diameter	Current	Voltage (pressure)				Contact resistance
		100Kpa	8.5KPa	4.4KPa	2KPa	
Ø1.5mm	10A	500V	250V	175V	150V	≤2.5mΩ
Ø2.5mm	25A					≤1mΩ